



# VEDREX

PRODUCT CATALOGUE



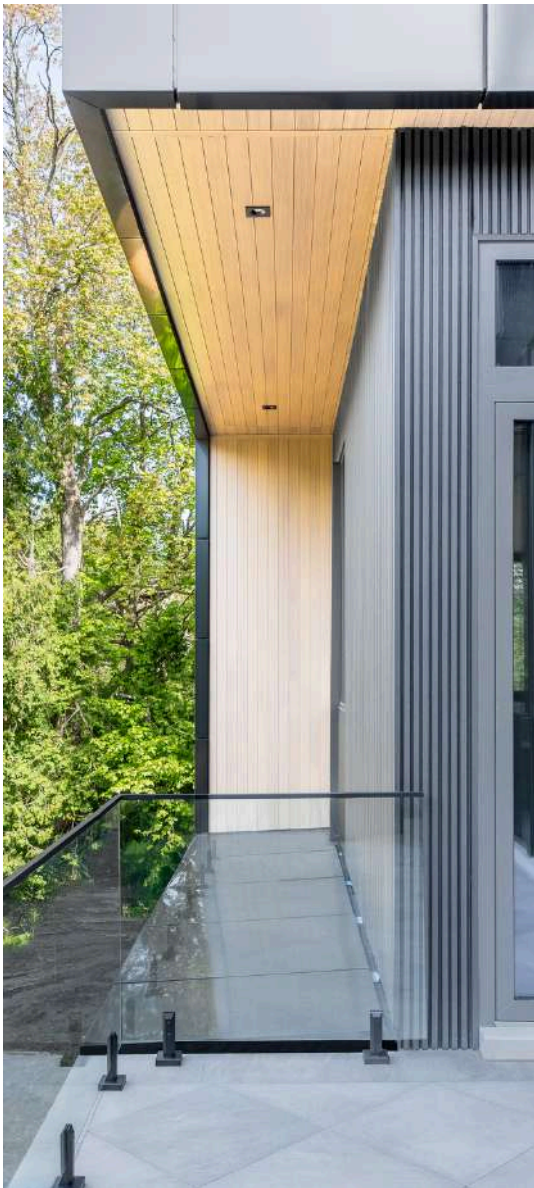
## Table of Contents:

Brand Introduction	3
Product Line Overview	4
Siding & Cladding Systems	5
Soffit & Ceiling Systems	7
Linear & Privacy Systems	9
System Integrations & Accessories	11
Finish & Colour Collections	15
Technical & Sustainability Information	17
Warranties & Maintenance Guide	18
How to Place an Order	24

# Brand Introduction

## Who We Are

**VEDREX** is a premium brand offering high-performance extruded aluminum systems designed to meet the demands of modern architecture. Engineered for both beauty and endurance, our products serve a wide range of applications, from residential façades to institutional interiors.



## What We Offer

We specialize in powder-coated and sublimated aluminum products for siding, cladding, soffits, ceilings, and versatile linear applications. Whether used outdoors or inside, **VEDREX** systems deliver a refined, architectural finish with unmatched durability.

Backed by  **4EDGE**

All **VEDREX** materials are proudly produced and supplied by 4EDGE Production Corp., a company rooted in precision manufacturing and innovation in surface finishing technologies.

The edge of surface  
excellence

# Product Line Overview



## Siding & Cladding Systems

- Durable, low-maintenance aluminum solutions for exterior façades and accent walls.

## Soffit & Ceiling Systems

- Clean, ventilated, and aesthetically versatile systems for roof overhangs and interior ceilings.

## Linear Aluminum Systems

- Sleek, customizable profiles ideal for decorative and small structural applications both indoors and outdoors.

## Finishes & Colors

- Architectural-grade powder coatings and sublimated woodgrain finishes designed for long-term performance.

## System Accessories

- Matching trims, corner caps, fasteners, and other components for seamless installation.



# Siding & Cladding Systems

**VEDREX** aluminum siding and cladding systems combine architectural elegance with rugged practicality. These systems are engineered to provide long-term value and style to any project type, from single-family homes to large-scale commercial façades.

## Key Features

- Non-combustible and corrosion-resistant extruded aluminum
- Minimal maintenance with exceptional weather resistance
- in a range of modern solid tones and realistic woodgrains
- Lightweight and easy to install

## Applications

- Residential & multi-unit housing
- Commercial & institutional exteriors or interiors
- Accent walls & feature façades

## Profile and Installation Options

- Horizontal, vertical & diagonal configurations
- V-Groove, Filled-Gap, and batten profiles

## Installation & Compatibility

- Clip-fastened and direct-mount options
- Integrates seamlessly with **VEDREX** soffits and trims

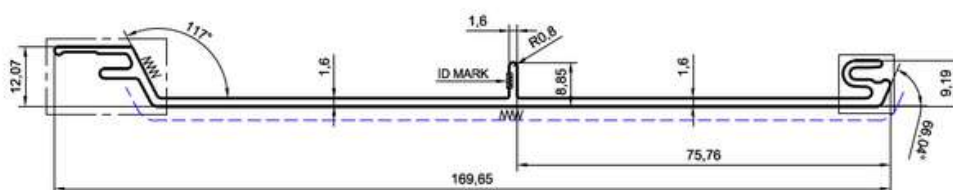
## Profile Specifications

### 6" V-Groove:

- Aluminum Alloy 6063-T6
- 0.607 lb/ft
- max length 19'

### 4" V-Groove:

- Aluminum Alloy 6063-T6
- 0.405 lb/ft
- max length 19'





# Soffit & Ceiling Systems

Bring precision and clean lines to overhead spaces with **VEDREX** aluminum soffit and ceiling systems. Suitable for both exterior and interior applications, these systems offer a ventilated, seamless solution with a contemporary finish.

## Key Features

- Lightweight and rigid aluminum construction Ventilation options for roof systems
- Concealed fastening
- Fade- and moisture-resistant finishes

## Applications

- Roof overhangs & eaves
- Commercial building canopies
- Interior ceilings in lobbies and corridors

## Profile Options

- Flat, perforated, and custom linear profiles
- Linear strips and concealed rail systems

## Compatibility

- Designed to pair with VEDREX cladding and linear systems



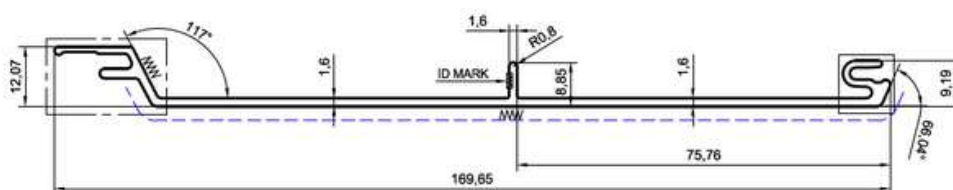
## Profile Specifications

### 6" V-Groove:

- Aluminum Alloy 6063-T6
- 0.607 lb/ft
- max length 19'

### 4" V-Groove:

- Aluminum Alloy 6063-T6
- 0.405 lb/ft
- max length 19'







Precision-engineered and versatile, **VEDREX** linear systems are designed for both exterior and interior applications. These systems bring a modern, clean aesthetic to a wide range of architectural contexts.

### Key Features

- Multiple profile sizes and shapes
- Seamless integration with other VEDREX systems
- Simple and efficient installation
- Structural and decorative use

### Applications

- Decorative wall and ceiling
- Privacy partition & batten system
- Pergolas and open-air structures
- Retail and hospitality features

### System Highlights

- Hollow and lightweight extrusions
- Custom lengths and finish options
- Customized clip and rail support systems

## Profile Specifications

### 6" wide Batten:

- Aluminum Alloy 6063-T6
- 1.591 lb/ft
- max length 12'

### 4" wide Batten:

- Aluminum Alloy 6063-T6
- 1.285 lb/ft
- max length 12'



# System Integration & Accessories

## Compatibility

- Systems are designed for modularity and unified aesthetics
- Trims match colour and texture options for a consistent finish

## Accessories

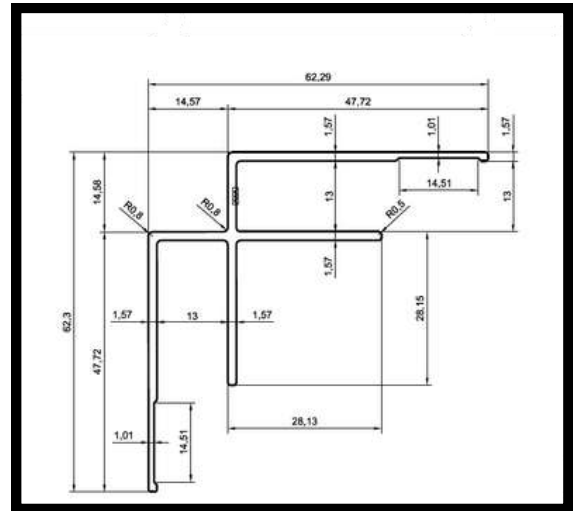
- J-Starter strips
- Outside and inside corner trims
- End edge and termination trims
- Expansion trims
- Mounting clips and fasteners



## Profile Specifications

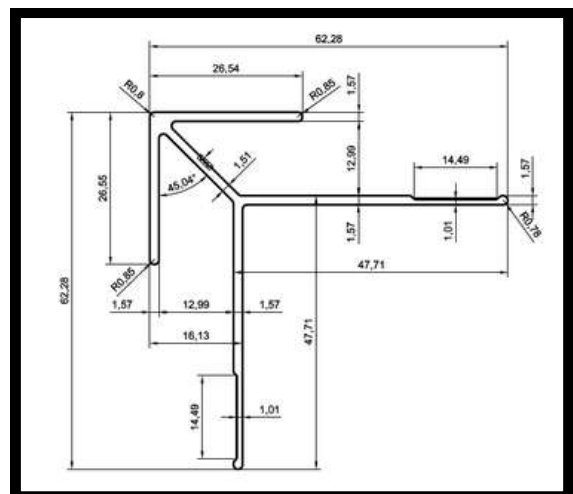
### Inside Corner:

- Aluminum Alloy 6063-T6
- 0.472 lb/ft
- max length 12'



### Outside Corner:

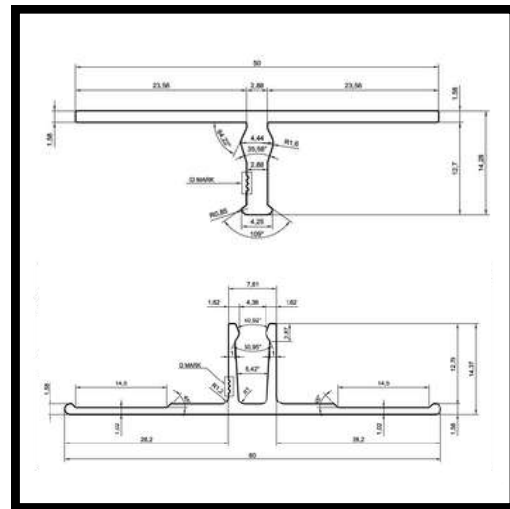
- Aluminum Alloy 6063-T6
- 0.437 lb/ft
- max length 12'



## Profile Specifications

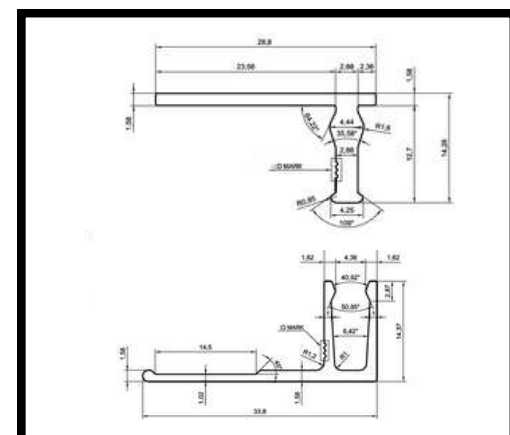
H-trim (2-piece item):

- Aluminum Alloy 6063-T6
- max length 12'
- Top cap: 0.220 lb/ft
- Backplate: 0.202 lb/ft



F-trim (2-piece item):

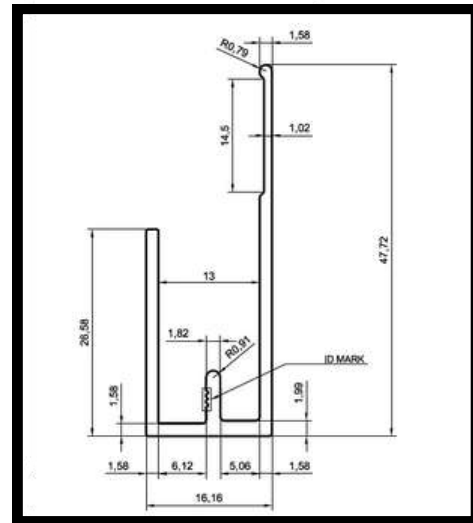
- Aluminum Alloy 6063-T6
- max length 12'
- Top cap: 0.159 lb/ft
- Backplate: 0.142 lb/ft



## Profile Specifications

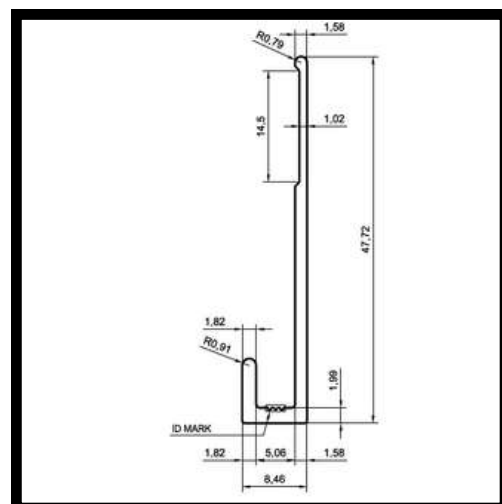
### J-trim:

- Aluminum Alloy 6063-T6
- 0.261 lb/ft
- max length 12'



### Starter strip:

- Aluminum Alloy 6063-T6
- 0.167 lb/ft
- max length 12'





# Finish & Colour Collections

## Sublimated Woodgrain finishes

High-resolution wood textures

In multiple tones

Fade-resistant and weather-proven



Marble



White Wood



Ancient Oak



Kentucky  
Oak



Olive



Carpino



Light Cedar



Light  
Walnut



Brown Oak



Natural Oak

(Contact the **VEDREX** sales team to get a full colour chart)

# Finish & Colour Collections

## Powder-coat Solid finishes

Durable, UV-stable solid colours

Matte and gloss options

Resistant to chipping, chalking, and peeling



Vode White  
(Matte)



Taupe  
(Low Gloss)



Techno Blue  
Tex



Fire Brick  
Tex



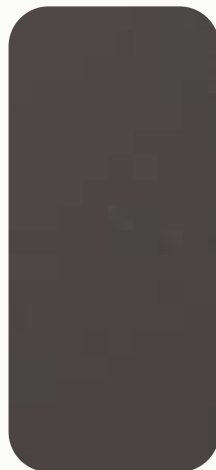
Woodland  
Sage Tex



Marble  
Granite Tex



Black  
(Matte)



Limestone  
(Low Gloss)



Charcoal  
Gray



Hampton  
Gray Tex

(Contact the **VEDREX** sales team to get a full colour chart)



# Technical & Sustainability Information

## Technical Performance and Certificates

- Non-combustible material as tested by ASTM E84, Standard Test Method for Surface Burning Characteristics of Building Materials, CAN/ULC S114-05, Standard Test Method for Determination of Non-Combustibility in Building Materials
- UV Resistance as tested by AAMA 2604/2605 and Qualicoat Class II and III compliant finishes
- Air-tightness (wind-load), Water-tightness and Hurricane Resistance as tested by ASTM E283,331 and 330
- Corrosion Resistance (no infiltration or blisters) as tested by 5000 hr of salt spray testing under DIN EN ISO 9227:1990 standard
- ISO 9001, IATF 16949, CE EN 15088, UKCA-CPR 781681

## Sustainability

- 100% recyclable
- Made from recyclable aluminum
- VOC and solvent-free coatings that do not emit volatile organic compounds
- Long lifecycle = less environmental impact
- Contributes to LEED credits and green building program



The background image shows a close-up, low-angle view of a modern building's exterior. The upper portion features a wooden soffit with horizontal slats and black metal brackets. Below this, a glass facade reflects the sky and surrounding trees. The overall aesthetic is clean and architectural.

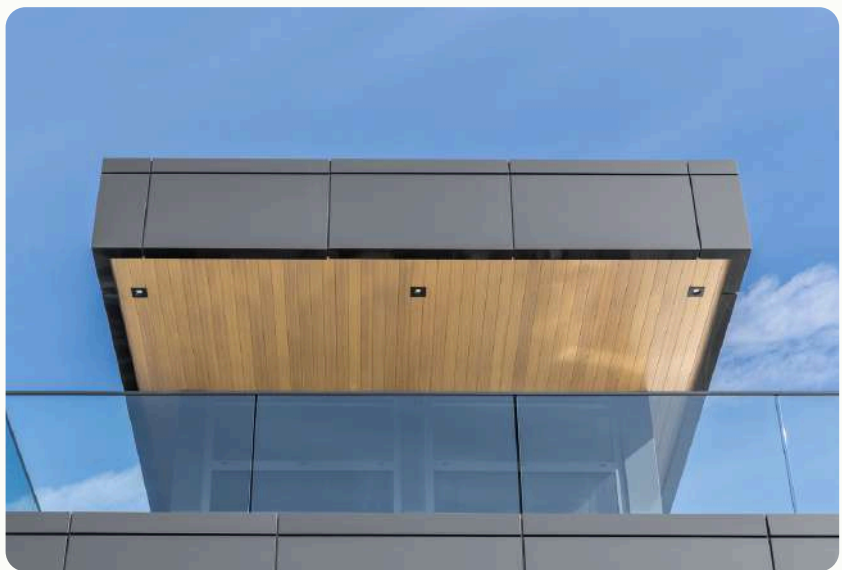
# Warranties & Maintenance Guide

## Warranties

- Up to a 15-year (depending on finish type) limited finish warranty guarantees against colour retention, gloss retention, cracking and chalking
- Lifetime limited material (Aluminum) warranty guarantees against rusting, warping, corroding, and defects in aluminum siding and soffit material
- Extruded Aluminum products must be separated from direct contact with dissimilar metal materials to avoid bimetallic or galvanic corrosion

## Cleaning & Maintenance Guide

- Wash with a soft brush, water using a garden hose and (if needed) a mild detergent with a pH of 6-7
- Avoid using high-pressure washers, stiff bristle brushes, and abrasive cleaners
- Use a touch-up pen (match finish) on cut edges if needed



## Aluminum Siding System

Profile:  
4" V-Groove

Finish:  
Woodgrain - Carpino





## Aluminum Siding System

Profile:  
4" V-Groove

Finish:  
Woodgrain - Natural Oak





## Aluminum Siding System

Profile:  
4" V-Groove

Finish:  
Solid - Graphite



## Aluminum Siding System

Profile:  
6" V-Groove

Finish:  
Woodgrain - Kentucky Oak





## Aluminum Siding System

Profile:  
6" V-Groove

Finish:  
Woodgrain - Tex Pine





## Aluminum Siding System

Profile:  
4" V-Groove

Finish:  
Woodgrain - Kentucky Oak

# How to Place an Order

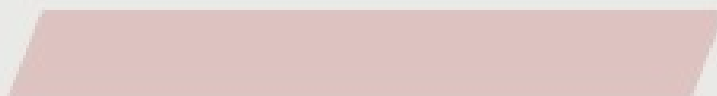
Choose product line and profile



Select finish and texture



Determine accessories and system components



Contact the **VEDREX** sales team for samples and quotes



# VEDREX

by



For additional information, contact:

Unit 5A - 11 Cidermill Ave., Concord, ON L4K4B6

416-300-1441

info@VEDREX.ca | www.VEDREX.ca